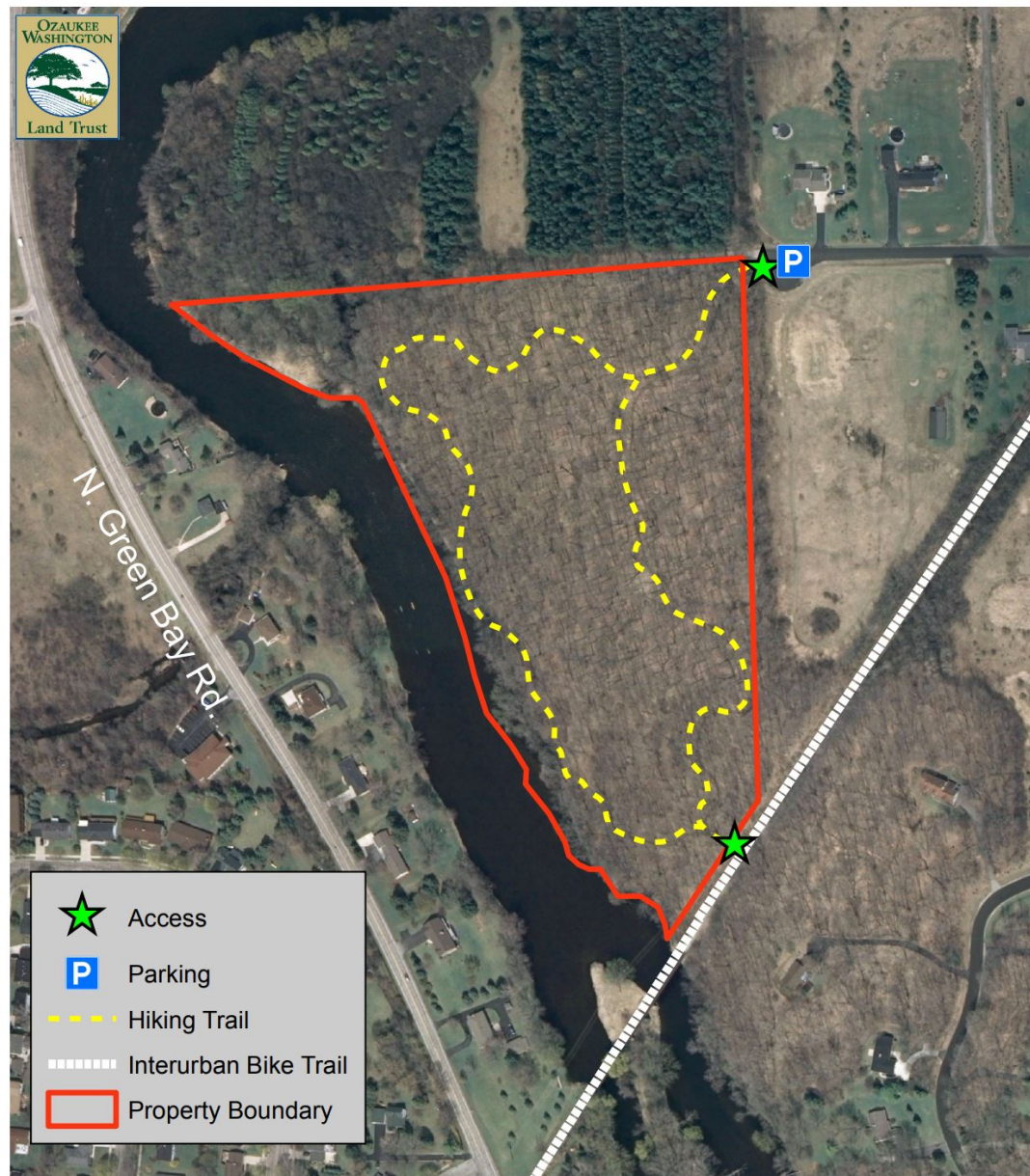
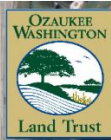


An aerial photograph of a rural landscape. In the center, there are several large, rectangular agricultural fields, some of which appear to be harvested or fallow. To the left of these fields, there is a cluster of farm buildings, including a large barn and several smaller structures. The surrounding area is densely wooded with green trees. A network of roads and paths crisscrosses the landscape. In the upper left, there are some circular features that could be ponds or small lakes. The overall scene depicts a typical rural farmstead.

# *Eder Farm*

*Generational Opportunity*



- ★ Access
- P Parking
- - - Hiking Trail
- - - Interurban Bike Trail
- Property Boundary

Map Produced by:  
The Ozaukee Washington Land Trust  
February 2012  
Date of Photography: 2010  
K. Weber

**Bratt Woods Trail Map**  
Town of Grafton  
Ozaukee County, Wisconsin

0 125 250 ft  
1 inch = 250 feet





#### Site Map Key



Overlook



You Are Here



Pool House

Donges Bay Gorge



Parking



Trail



Preserve

Map Produced by:  
The Ozaukee - Washington Land Trust  
January 2012  
Date of Photography: 2005  
K. Weber

**Donges Bay Gorge Natural Area**  
**Mequon, Wisconsin**  
**Ozaukee County, Wisconsin**

0 150 300  
Feet

1 inch = 300 feet

# Fish Creek Reserve

*Village of River Hills*

*Established 2020*



*Headquarters*

*Walking Trail, 1.5 miles*

*Fish Creek Reserve*

W GREENBROOK RD

SPRUCE RD

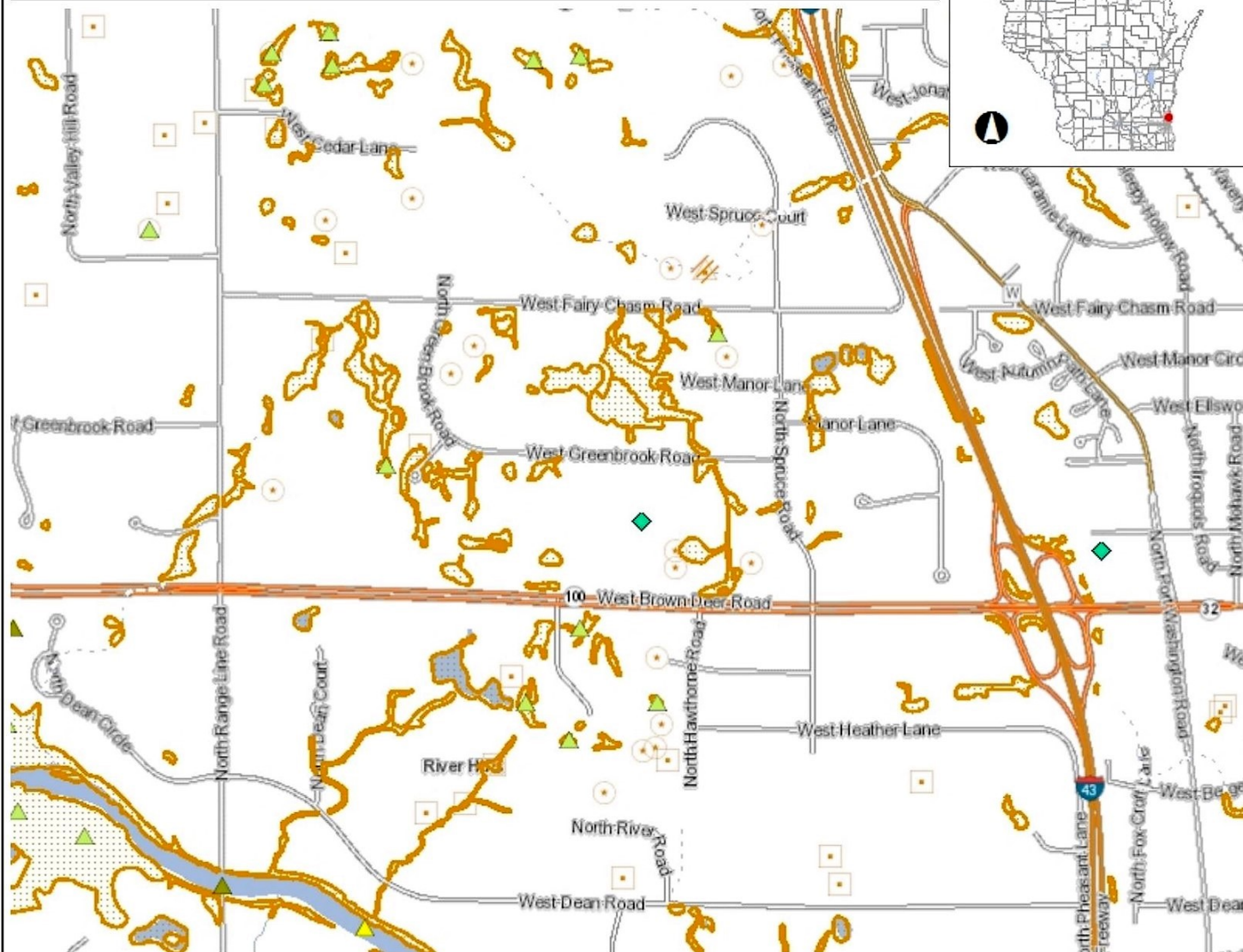
CONGREGATION  
EMANUEL B'NE  
JESHURUN

W BROWN DEER RD

Lynden Sculpture Garden



## Eder Farm Wetlands and Waterways



### Legend

- ▲ Station Points with Historic Data
- ▲ Station Points with Recent Data (10 years)
- ▲ Station Points without Data (Active, Usable)
- ★ Station Points without Data (New Station, Pending)
- Station Lines with Historic Data
- Station Lines with Recent Data (10 years)
- Station Lines without Data (Active, Usable)
- + Station Lines without Data (New Station, Pending)
- Station Areas with Historic Data
- Station Areas with Recent Data (10 years)
- ◆ Wetland Identifications and Confirmations

#### Wetland Class Points

- ▲ Dammed pond
- Excavated pond
- Filled excavated pond
- ▲ Filled/draind wetland
- Wetland too small to delineate

#### Filled Points

#### Wetland Class Areas

- Wetland
- Upland

#### Filled Areas

#### Wetland Class Points

- ▲ Dammed pond
- Excavated pond
- Filled excavated pond

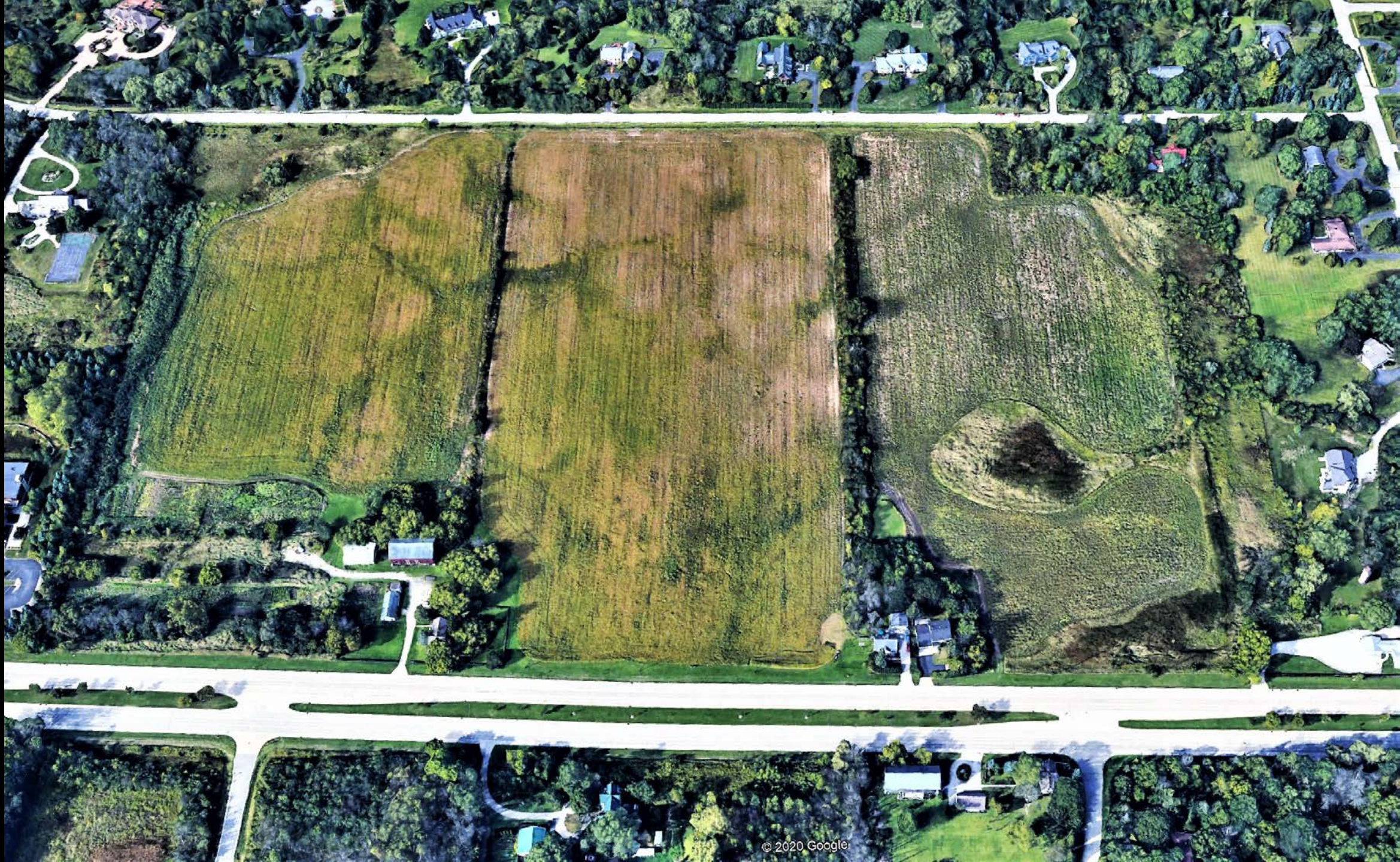
### Notes

0.5 0 0.25 0.5 Miles

NAD\_1983\_HARN\_Wisconsin\_TM

1: 15,840

DISCLAIMER: The information shown on these maps has been obtained from various sources, and are of varying age, reliability and resolution. These maps are not intended to be used for navigation, nor are these maps an authoritative source of information about legal land ownership or public access. No warranty, expressed or implied, is made regarding accuracy, applicability for a particular use, completeness, or legality of the information depicted on this map. For more information, see the DNR Legal Notices web page: <http://dnr.wi.gov/legal/>



An aerial photograph of a suburban area with a blue line tracing the Fish Creek watershed. The watershed starts near a lake in the top right, flows west through a residential area, crosses a multi-lane highway, and continues south through more residential areas and a golf course. The creek eventually flows into a larger body of water at the bottom left. The map is overlaid with a grid of streets and green spaces.

*Fish  
Creek*

*Fairy Chasm*

*Eder  
Farm*















