

**In the Matter of a Request for Approval of the First  
Phase of the USM Campus Landscaping Master Plan  
Improvement Pursuant to the Special Use Permit of  
University School of Milwaukee**

**RESOLUTION NO. 2022 – 03**

WHEREAS, the Village of River Hills adopted Resolution No. 2013-12 granting an Amended and Restated Special Use Permit (hereinafter "Permit") to the University School of Milwaukee Corporation (hereinafter "USM") on May 15, 2013 (amending and restating prior Special Use Permits as set for in that Permit) authorizing the use of the lands and buildings specified at 2100 West Fairy Chasm Road for a private school subject to all of the terms, conditions and restrictions of such Permit; and

WHEREAS, USM has submitted a letter dated February 10, 2022, requesting approval for the first phase of a USM campus landscaping master plan improvement, to provided buffers for the Fairy Chasm neighbors to the south and further supplement planning along the earthen berm, as well as for those neighbors adjacent to the northeastern section of campus whose views have been impacted by Emerald Ash Borer activity in their trees (hereinafter "the 2022 First Phase Landscaping") as outlined in the letter a copy of which is attached as Appendix A that is incorporated and made part of this Resolution; and

WHEREAS, the first phase of the USM campus landscaping master plan improvement provides the following: 1) A vegetated buffer and earthen berm for neighbors located northeast of campus and scattered plantings of native flowering shrubs, small trees along the evergreen screen to enhance biodiversity and seasonal interest; 2) Enhance existing berm and screen plantings along West Fairy Chasm with additional evergreen tree plantings; and 3) Incorporate shrub planting at the slope along the driveway between the new baseball field and existing track facility; and

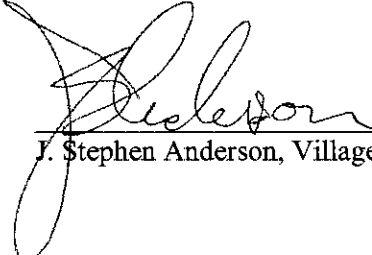
WHEREAS, the Permit specifically requires that the physical locations of substantial landscaping and planting screens shall be subject to approval by the Village Board prior to construction or installation; and

WHEREAS, USM has requested that the Village Board approve the first phase of a USM campus landscaping master plan improvements that are shown in the attached Appendix B.

NOW THEREFORE, BE IT RESOLVED that the Village Board finds that the proposed 2022 Phase I Landscaping Master Plan Improvements and their locations: (1) are not hazardous, harmful, offensive or otherwise adverse to the environment in the Village; (2) will not be detrimental to the safety, health, morals, aesthetics and general welfare of the Village; and (3) a need exists for them at their locations as proposed; and

BE IT FURTHER RESOLVED by the Village Board that the 2022 Phase I Landscaping Master Plan Improvements are approved and may be physically located and installed as set forth in the attached Appendix B.

PASSED AND ADOPTED by the Village Board of the Village of River Hills this 9<sup>th</sup> day of March 2022.

  
J. Stephen Anderson, Village President

Countersigned:

  
Tammy LaBorde, Village Clerk



THE EXPERIENCE FOR A LIFETIME

February 10, 2022

Mr. J. Stephen Anderson  
River Hills Village Board  
7650 North Pheasant Lane  
River Hills, WI 53217

Dear Mr. Anderson:

I am writing to seek Village Board approval for the first phase of a USM campus landscaping master plan improvement. As you may know, in December 2019 we removed approximately 9000 dead ash trees from 41 campus acres, primarily on the east side of our campus. We worked with our east side neighbors to leave about an eight-foot strip of dead ash trees to maintain a buffer. Those trees were removed in fall of 2021. We have many more ash trees to remove on the west side of campus. During this time the School engaged SLAM, a national architecture firm, to design a master campus landscape architecture plan. Members of the SLAM team have been on campus for multiple workshops to allow different groups of people to develop a shared project vision. A neighbor workshop was held on October 12<sup>th</sup>, 2021. While the master plan is close to completion, the work will take many years and lots of funding to complete.

The first phase of improvements is proposed to provide visual buffers for our Fairy Chasm neighbors to the south to further supplement planting along the earthen berm, as well as for those neighbors adjacent the northeastern section of campus whose views have been impacted by Emerald Ash Borer activity in our trees. An additional shrub planting is also being proposed near the new baseball field.

We are asking for approval of the first phase of our master plan which includes:

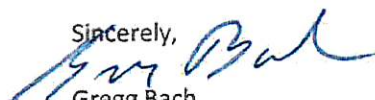
1. Provide a vegetated buffer and earthen berm for our neighbors located northeast of campus. Provide scattered plantings of native flowering shrubs and small trees along the evergreen screen to enhance biodiversity and provide the seasonal interest.
2. Enhance existing berm and screen plantings along West Fairy Chasm Road with additional evergreen tree plantings.
3. Incorporate shrub planting at the slope along the driveway between the new baseball field and existing track facility.

There will be no changes in outdoor lighting or sound. Project plans are being submitted with this letter and are ready for your approval at your next Village Board Meeting on March 9th, 2022.

We are finalizing the landscape plan for the area between the Head of School residence and County Line Road and hope to have that plan ready for approval at the May 18, 2022 Board meeting.

University School of Milwaukee is committed to providing improvements that fit within the character of the existing campus and community. Thank you for your University School plan interest and for your support of our efforts to rebuild our campus landscape.

Sincerely,

  
Gregg Bach  
Assistant Head of School



# Campus Landscape Improvements



Area of Landscape Improvements Seeking Village Board Approval on May 18<sup>th</sup>, 2022

Area of Landscape Improvements Seeking Village Board Approval on March 9<sup>th</sup>, 2022







THE S/L/M COLLECTION

80 Glastonbury Boulevard  
Glastonbury, CT 06033-4410  
Phone: 860 6578077

www.slamcoll.com

Drawn	
EFS	
Checked	
DG	



THE EXPERIENCE FOR A LIFETIME

UNIVERSITY  
SCHOOL OF  
MILWAUKEE

**EVERGREEN  
BUFFER**

2100 W FAIRY CHASM RD.  
RIVER HILLS, WI 53217

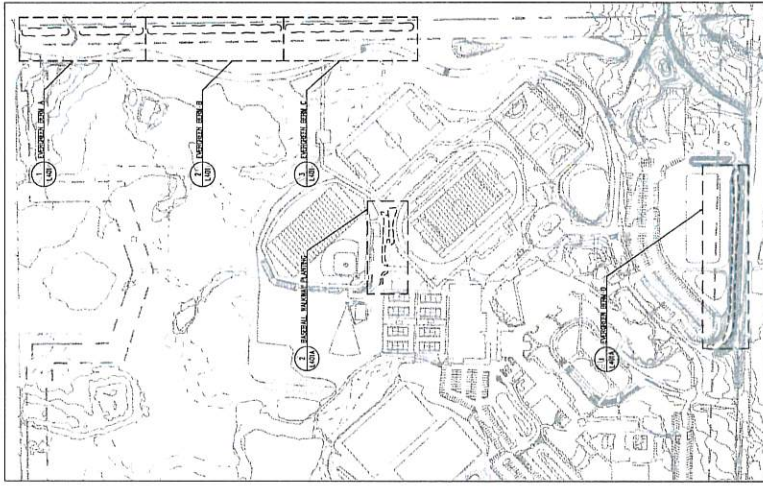
NOT FOR CONSTRUCTION



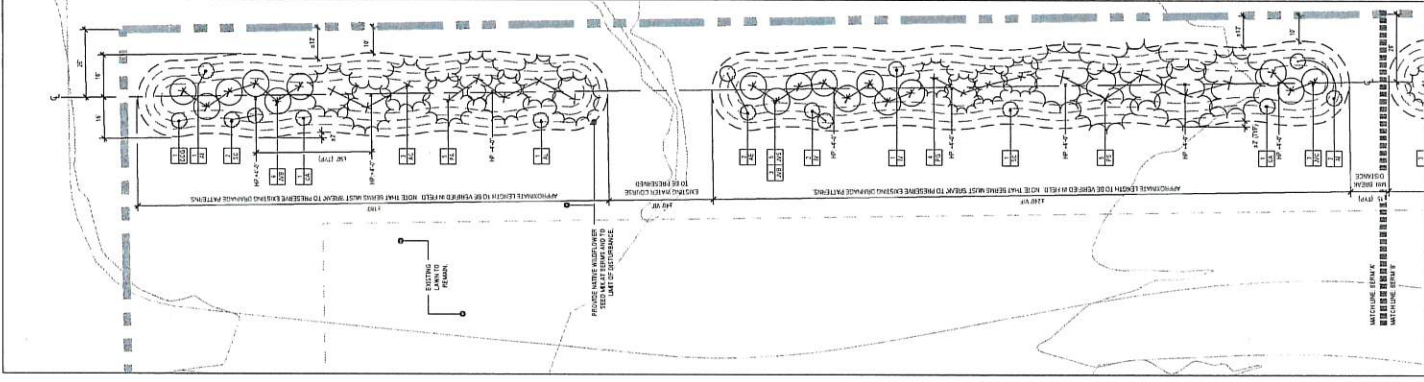
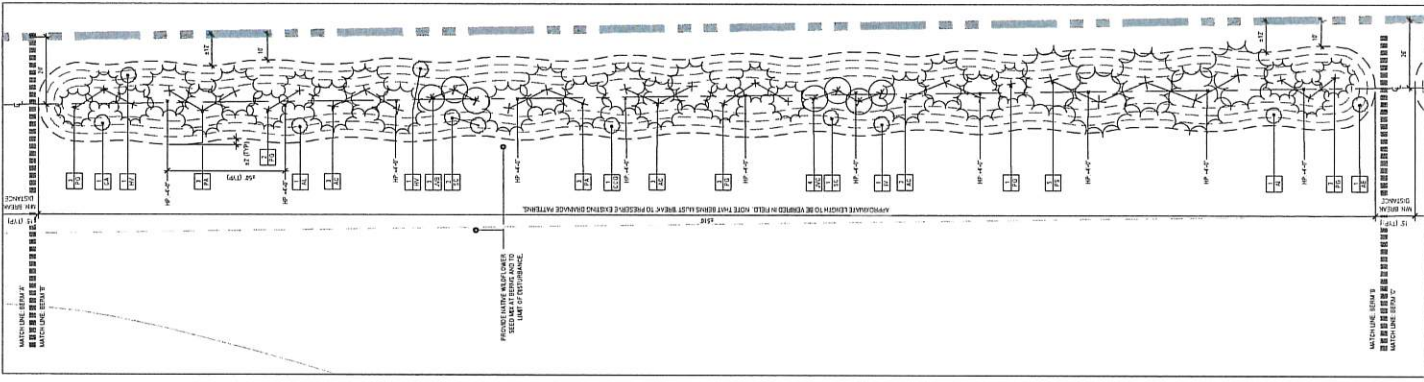
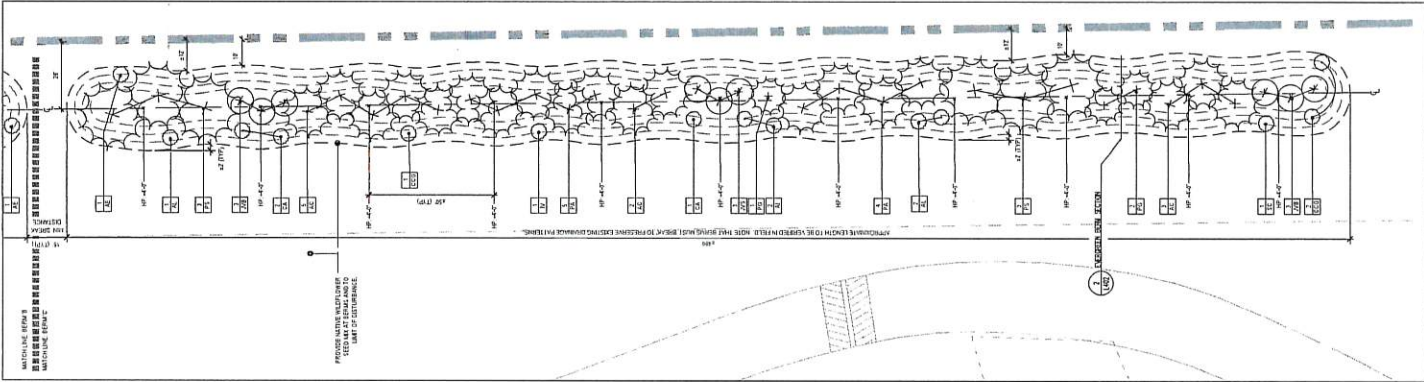
Number	Date	Issued For
✓	12/11/01	5000/01.

## GRADING AND PLANTING PLAN

<b>AS SHOWN</b>	<b>L401</b>
<b>2/17/2022</b>	<b>Cutting room 2nd</b>
<b>20514.00</b>	
<b>P-192, Room 2nd</b>	
<b>1 Year</b>	
<b>\$1.00</b>	



PLANT SPECIES - REMUS K. R. 1.2°						
CODE	QTY	BOTANICAL NAME	COMMODITY	SIZE	ROOT	COMMENTS
SHRUBS				3" HT. JAIL	BIB	
AI	6	ALNUS INOMIA	SPECIES ALDER			
AL	5	ARALIANCHER LAVIS	ALLEGRIAN SPRINGBERRY			
AE	4	ARONIA MACHOCHIA LATA	CHECKERBERRY			
CA	6	CORNUS AMERICANA	AMERICAN HAZELBUT			
CCO	5	CEMILEDUS CRUS-ALTI THERM	THORNLESS COCK-UPUR HAWTHORN			
HF	2	MANULUS VERGIANA	MITCHAMILL			
IV	4	LEX VERTICILLATA	WINTERBERRY			
IV	1	LEX VERTICILLATA (AALD)	WINTERBERRY (AALD)			
SC	7	SAMBUCUS CAUCASIS	ELDERBERRY			
EVERGREEN TREES						
AC	22	ABIES CONCOLOR	WHITE FIR	8" FT HT	BAB	SYMMETRICAL, WITH BRITTLE LEADER
AB	18	JUNIPERUS V. TURNER	BUAHIR JUNIPER			
ABC	7	JUNIPERUS V. CAUMERT	CAUMERT JUNIPER			
AVE	8	JUNIPERUS V. STAR POWER	STAR POWER JUNIPER			
PA	20	PIEDS ABIES	NORWAY SPRUCE			
PO	19	PIEDS OLIVIA	WHITE SPRUCE			
P3	15	PRINUS PALMESTIS	SCOTCH PINE			
TEED						
1. LONG-GROWING PRUNING FOR PLANT COLE BY 2. PLANTING IN THE WINTER, IN THE WINTER 3. PLANTING IN THE WINTER, IN THE WINTER 4. PLANTING IN THE WINTER, IN THE WINTER 5. PLANTING IN THE WINTER, IN THE WINTER 6. PLANTING IN THE WINTER, IN THE WINTER 7. PLANTING IN THE WINTER, IN THE WINTER 8. PLANTING IN THE WINTER, IN THE WINTER 9. PLANTING IN THE WINTER, IN THE WINTER 10. PLANTING IN THE WINTER, IN THE WINTER 11. PLANTING IN THE WINTER, IN THE WINTER 12. PLANTING IN THE WINTER, IN THE WINTER 13. PLANTING IN THE WINTER, IN THE WINTER 14. PLANTING IN THE WINTER, IN THE WINTER 15. PLANTING IN THE WINTER, IN THE WINTER 16. PLANTING IN THE WINTER, IN THE WINTER 17. PLANTING IN THE WINTER, IN THE WINTER 18. PLANTING IN THE WINTER, IN THE WINTER 19. PLANTING IN THE WINTER, IN THE WINTER 20. PLANTING IN THE WINTER, IN THE WINTER 21. PLANTING IN THE WINTER, IN THE WINTER 22. PLANTING IN THE WINTER, IN THE WINTER 23. PLANTING IN THE WINTER, IN THE WINTER 24. PLANTING IN THE WINTER, IN THE WINTER 25. PLANTING IN THE WINTER, IN THE WINTER 26. PLANTING IN THE WINTER, IN THE WINTER 27. PLANTING IN THE WINTER, IN THE WINTER 28. PLANTING IN THE WINTER, IN THE WINTER 29. PLANTING IN THE WINTER, IN THE WINTER 30. PLANTING IN THE WINTER, IN THE WINTER 31. PLANTING IN THE WINTER, IN THE WINTER 32. PLANTING IN THE WINTER, IN THE WINTER 33. PLANTING IN THE WINTER, IN THE WINTER 34. PLANTING IN THE WINTER, IN THE WINTER 35. PLANTING IN THE WINTER, IN THE WINTER 36. PLANTING IN THE WINTER, IN THE WINTER 37. PLANTING IN THE WINTER, IN THE WINTER 38. PLANTING IN THE WINTER, IN THE WINTER 39. PLANTING IN THE WINTER, IN THE WINTER 40. PLANTING IN THE WINTER, IN THE WINTER 41. PLANTING IN THE WINTER, IN THE WINTER 42. PLANTING IN THE WINTER, IN THE WINTER 43. PLANTING IN THE WINTER, IN THE WINTER 44. PLANTING IN THE WINTER, IN THE WINTER 45. PLANTING IN THE WINTER, IN THE WINTER 46. PLANTING IN THE WINTER, IN THE WINTER 47. PLANTING IN THE WINTER, IN THE WINTER 48. PLANTING IN THE WINTER, IN THE WINTER 49. PLANTING IN THE WINTER, IN THE WINTER 50. PLANTING IN THE WINTER, IN THE WINTER 51. PLANTING IN THE WINTER, IN THE WINTER 52. PLANTING IN THE WINTER, IN THE WINTER 53. PLANTING IN THE WINTER, IN THE WINTER 54. PLANTING IN THE WINTER, IN THE WINTER 55. PLANTING IN THE WINTER, IN THE WINTER 56. PLANTING IN THE WINTER, IN THE WINTER 57. PLANTING IN THE WINTER, IN THE WINTER 58. PLANTING IN THE WINTER, IN THE WINTER 59. PLANTING IN THE WINTER, IN THE WINTER 60. PLANTING IN THE WINTER, IN THE WINTER 61. PLANTING IN THE WINTER, IN THE WINTER 62. PLANTING IN THE WINTER, IN THE WINTER 63. PLANTING IN THE WINTER, IN THE WINTER 64. PLANTING IN THE WINTER, IN THE WINTER 65. PLANTING IN THE WINTER, IN THE WINTER 66. PLANTING IN THE WINTER, IN THE WINTER 67. PLANTING IN THE WINTER, IN THE WINTER 68. PLANTING IN THE WINTER, IN THE WINTER 69. PLANTING IN THE WINTER, IN THE WINTER 70. PLANTING IN THE WINTER, IN THE WINTER 71. PLANTING IN THE WINTER, IN THE WINTER 72. PLANTING IN THE WINTER, IN THE WINTER 73. PLANTING IN THE WINTER, IN THE WINTER 74. PLANTING IN THE WINTER, IN THE WINTER 75. PLANTING IN THE WINTER, IN THE WINTER 76. PLANTING IN THE WINTER, IN THE WINTER 77. PLANTING IN THE WINTER, IN THE WINTER 78. PLANTING IN THE WINTER, IN THE WINTER 79. PLANTING IN THE WINTER, IN THE WINTER 80. PLANTING IN THE WINTER, IN THE WINTER 81. PLANTING IN THE WINTER, IN THE WINTER 82. PLANTING IN THE WINTER, IN THE WINTER 83. PLANTING IN THE WINTER, IN THE WINTER 84. PLANTING IN THE WINTER, IN THE WINTER 85. PLANTING IN THE WINTER, IN THE WINTER 86. PLANTING IN THE WINTER, IN THE WINTER 87. PLANTING IN THE WINTER, IN THE WINTER 88. PLANTING IN THE WINTER, IN THE WINTER 89. PLANTING IN THE WINTER, IN THE WINTER 90. PLANTING IN THE WINTER, IN THE WINTER 91. PLANTING IN THE WINTER, IN THE WINTER 92. PLANTING IN THE WINTER, IN THE WINTER 93. PLANTING IN THE WINTER, IN THE WINTER 94. PLANTING IN THE WINTER, IN THE WINTER 95. PLANTING IN THE WINTER, IN THE WINTER 96. PLANTING IN THE WINTER, IN THE WINTER 97. PLANTING IN THE WINTER, IN THE WINTER 98. PLANTING IN THE WINTER, IN THE WINTER 99. PLANTING IN THE WINTER, IN THE WINTER 100. PLANTING IN THE WINTER, IN THE WINTER 101. PLANTING IN THE WINTER, IN THE WINTER 102. PLANTING IN THE WINTER, IN THE WINTER 103. PLANTING IN THE WINTER, IN THE WINTER 104. PLANTING IN THE WINTER, IN THE WINTER 105. PLANTING IN THE WINTER, IN THE WINTER 106. PLANTING IN THE WINTER, IN THE WINTER 107. PLANTING IN THE WINTER, IN THE WINTER 108. PLANTING IN THE WINTER, IN THE WINTER 109. PLANTING IN THE WINTER, IN THE WINTER 110. PLANTING IN THE WINTER, IN THE WINTER 111. PLANTING IN THE WINTER, IN THE WINTER 112. PLANTING IN THE WINTER, IN THE WINTER 113. PLANTING IN THE WINTER, IN THE WINTER 114. PLANTING IN THE WINTER, IN THE WINTER 115. PLANTING IN THE WINTER, IN THE WINTER 116. PLANTING IN THE WINTER, IN THE WINTER 117. PLANTING IN THE WINTER, IN THE WINTER 118. PLANTING IN THE WINTER, IN THE WINTER 119. PLANTING IN THE WINTER, IN THE WINTER 120. PLANTING IN THE WINTER, IN THE WINTER 121. PLANTING IN THE WINTER, IN THE WINTER 122. PLANTING IN THE WINTER, IN THE WINTER 123. PLANTING IN THE WINTER, IN THE WINTER 124. PLANTING IN THE WINTER, IN THE WINTER 125. PLANTING IN THE WINTER, IN THE WINTER 126. PLANTING IN THE WINTER, IN THE WINTER 127. PLANTING IN THE WINTER, IN THE WINTER 128. PLANTING IN THE WINTER, IN THE WINTER 129. PLANTING IN THE WINTER, IN THE WINTER 130. PLANTING IN THE WINTER, IN THE WINTER 131. PLANTING IN THE WINTER, IN THE WINTER 132. PLANTING IN THE WINTER, IN THE WINTER 133. PLANTING IN THE WINTER, IN THE WINTER 134. PLANTING IN THE WINTER, IN THE WINTER 135. PLANTING IN THE WINTER, IN THE WINTER 136. PLANTING IN THE WINTER, IN THE WINTER 137. PLANTING IN THE WINTER, IN THE WINTER 138. PLANTING IN THE WINTER, IN THE WINTER 139. PLANTING IN THE WINTER, IN THE WINTER 140. PLANTING IN THE WINTER, IN THE WINTER 141. PLANTING IN THE WINTER, IN THE WINTER 142. PL						



A



U

W





80 Glastonbury Boulevard  
Glastonbury, CT 06033-4410  
Phone: 860 657.8077  
[www.slamcoll.com](http://www.slamcoll.com)

Drawn	
Checked	

UNIVERSITY  
SCHOOL OF  
MILWAUKEE

**EVERGREEN  
BUFFER**

2100 W FAIRY CHASM RD.  
RIVER HILLS, WI 53217

NOT FOR CONSTRUCTION

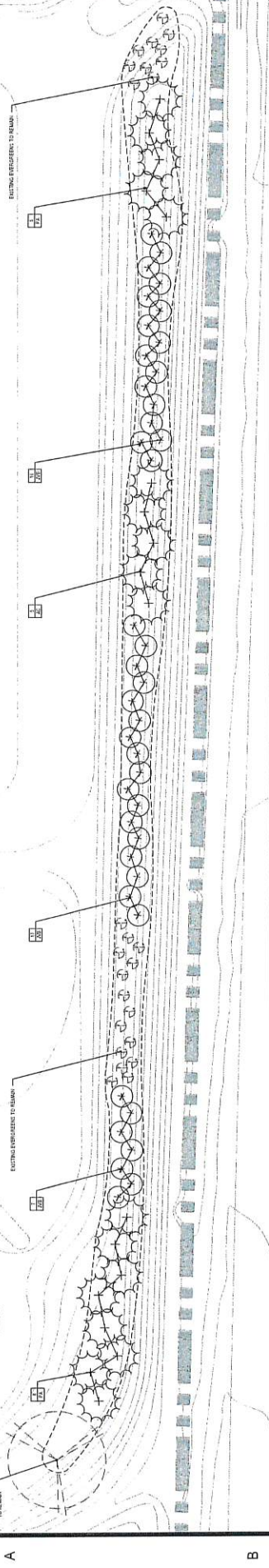


Number	Date	Issued For
✓	RECEIVED	ISSUED FOR

## BASEBALL & BERM PLANTING

DATE	2/17/2022	AS SHOWN	20514.00
ISSUE			
PRINT NUMBER			
CHANGING NUMBER			

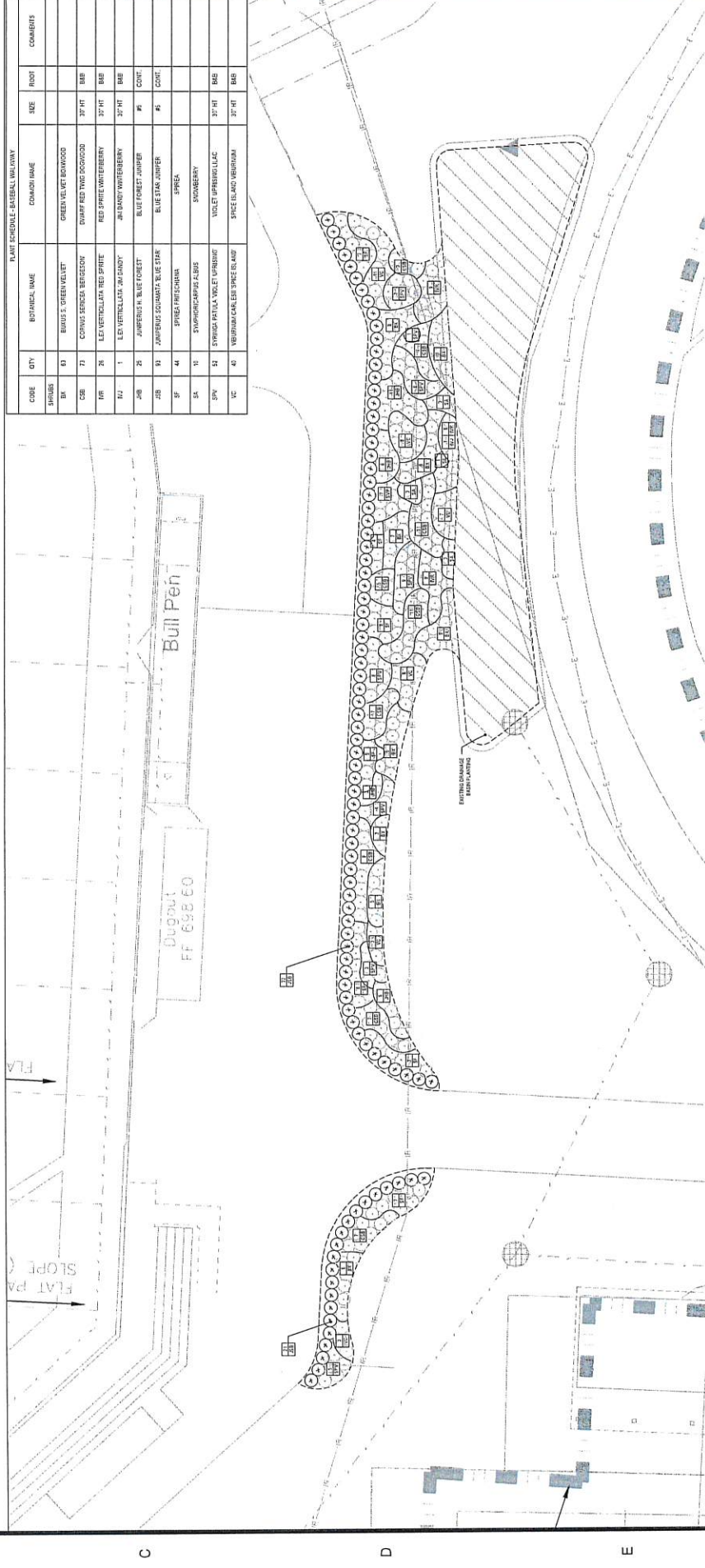
CODE		QTY	PLANT SCHEDULE - ITEM ID		COORDINATE
EXPERIMENTAL PILES			HYDRAULIC NAME	COORDINATE NAME	SIZE
AC	6		ABEE CONCOLOR	WHITE FIB	E-7 HT
AB	4		ABECONSTRUTY BUNAK	BUNAK AUWER	E-7 HT
PA	13		PRCA ABEE	ROMAK SPANSE	E-7 HT



1  
EVERGREEN BERM D



PLANT SCHEDULE - BARBERSHILL WALKWAY						
CODE	QTY	BOTANICAL NAME	COMMON NAME	SIZE	ROOT	COMMENTS
SHRUB						
BA	63	BALUS'S GREEN VOLET	GREEN NAIL BIT BANYWOOD			
CDB	71	CORPUS SERRATA-BEGONIA	DWARF RED TINE POWERSOFT	30" HT	B&B	
MR	24	LEA VERTICILLATA RED SPITE	RED SPIRIT WINTERFLY	30" HT	B&B	
NJ	1	LEA VERTICILLATA WAGANDY	JANUARY WINTERBERRY	30" HT	B&B	
JB	25	JARDINUS BLUE FOREST	BLUE FOREST JUMPER	#5	CONT.	
ASB	31	JARDINUS SCUMPA BLUE STAR	BLUE STAR JUMPER	#2	CONT.	
SP	44	SPYRAPHIS FUSCANA	SPYRAPHIS			
SA	10	SYMPHORICA ALBA	SNOWBERRY			
SPW	52	SYRPHIA PALLIDA VIOLET GARDEN	VIOLET UPBURNING LILAC	30" HT	B&B	
VC	40	VERONICA CANES SPICE BLAZE	SPICE LILAC VERONICA	30" HT	B&B	



2 BASEBALL WALKWAY



